

CONNECTORS AND ACCESSORIES

We are one of the most experienced manufacturers of single-pole connections. We have been manufacturing and designing since 1950, especially bundle contact plugs, spring-loaded plugs and sockets. We constantly develop and optimize our products.

Our manufacturing possibilities are endless due to versatile machinery. We are able to produce special custom designed plugs, sockets and leads from as low as 100 pieces to quantities of 100.000 pieces and above.

All connecting leads are soldered lead free and all our products meet strict quality assurance (RoHS) criteria.

All our products are "Made in Germany".

Ottmar Schnepf
 electronic components
 Auweg 5
 D - 74861 Neudenau
 Tel: 0049 6264 9203-0
 Fax: 0049 6264 920333
 E-mail faosp@web.de
www.schnepf-neudenau.de

In addition we produce:
 1 mm plugs, sockets and connecting leads, 3 mm plugs and sockets, 4 mm of special plugs and spring-loaded sockets on request.

Program Overview	01
4 mm Plugs	02
4 mm Plugs	03
4 mm Short-circuit Plug	03
4 mm Safety Plugs	04
4 mm Couplings	04
4 mm Safety Couplings	04
4 mm Sockets	05
4 mm Safety Sockets	05
4 mm Leads	06
4 mm Test Leads	06
4 mm Test Prods	07
Cable Program	07
2 mm Plug	08
2 mm Sockets	08
2 mm Leads	08
2 mm Test Probes	08
Connector Adapter	08
2 mm Gold Contact Plug System	09
3.5 mm Gold Contact Plug System	09
4 mm Gold Contact Plug System	09
2,4 mm Plugs	10
2.4 mm Sockets	10
4 mm Installation Plugs	10
Examples of Special Plug	11
Special socket	11
Special plug out of High-grade steel	12
Spring-loaded Contacts	12
Lead Rack for 2 mm & 4 mm Lead	13
Rack Set	13
Lead rack Trolley	13
Hook clips	14
Alligator clips	14
Binding Post	14
Leads Sets Kits	15
Super Flex Cable	15
The Company	16
Contact Persons	16

SCHNEPP

4 mm

PLUGS

bundle contact plugs 4 mm Ø and spring-loaded plugs 4 mm Ø contact resistance app. 0,3 mΩ and up to 30 A per each connecting

lead with up to 2.5 mm², outside diameter up to 4 mm Ø, plugs are nickel plated brass, can also be silver or gold plated on request.



N 4000 L
Bundle contact plug 4 mm Ø with solder connection and PVC handle sleeve in the colors black, red, blue, yellow, green and grey.



N 4000 S
Bundle contact plug 4 mm Ø with screw connection and PVC handle sleeve in the colors black, red, blue, yellow, green and grey.



S 4000 L
Bundle contact plug 4 mm Ø with protective cap and soldering connection, PVC handle sleeve in the colors black, red, blue, yellow, green and grey.



S 4000 S
Bundle contact plug 4 mm Ø with protective cap and screw connection, PVC handle sleeve in the colors black, red, blue, yellow, green and grey.



S 4000 L
Bundle contact plug 4 mm Ø with protective cap and soldering connection, PVC handle sleeve in the colors black, red, blue, yellow, green and grey.



S 4004 S
Bundle contact plug 4 mm Ø with protective cap and 4 mm Ø cross-connection hole and screw connection, PVC handle sleeve in the colors black, red, blue, yellow, green and grey.



FK 4000 L
Feather/spring basket plug 4 mm Ø with soldering connection and PVC handle sleeve in the Colors black, red, blue, yellow, green and grey.



FK 4041 L
Feather/spring basket plug 4 mm Ø with 4 mm Ø axial socket and solder connection, insulated handle made of Polyethylene, simple too install, in the colors black, red, blue, yellow, green, grey, brown, violet and white.



N 4041 L
Bundle contact plug 4 mm Ø with 4 mm Ø axial socket and solder connection, insulated handle made of Polyethylene, simple to install, in the colors black, red, blue, yellow, green, grey, brown, violet and white.



N 4041 S
Bundle contact plug 4 mm Ø with axial socket 4 mm Ø and screw connection with insulated handle made of Polyethylene simple to install, in the colors black, red, blue, yellow, green, grey, brown, violet and white.



S 4041 L
Bundle contact plug 4 mm Ø with protective cap and 4 mm Ø axial socket, solder connection, insulated handle made of Polyethylene, simple to install, in the colors black, red, blue, yellow, green, grey, brown, violet and white.



S 4041 S
Bundle contact plug 4 mm Ø with protective cap and 4 mm Ø axial socket, screw connection, insulated handle made of Polyethylene, simple to install, in the colors black, red, blue, yellow, green, grey, brown, violet and white.

4 mm

PLUGS

SHORT CIRCUIT PLUGS



FK 1146 L
Feather/spring basket plug 4 mm Ø with solder connection and Polyamide handle as well as cable break protection in the Colors black, red, blue, yellow, green and grey.



FK 1146 C
Feather/spring basket plug 4 mm Ø with crimp connection and Polyamide handle as well as cable break protection in the Colors black, red, blue, yellow, green and grey.



N 4042 L
Bundle contact plug 4 mm Ø with 4 mm Ø axial socket & solder connection with two-piece insulated handle made of Polyethylene & Polyamide for particularly high mechanical loads, in the colors black, red, blue, yellow, green, grey and white.



N 4042 S
Bundle contact plug 4 mm Ø with 4 mm Ø axial socket and screw connection with two-piece insulated handle made of Polyethylene & Polyamide for particularly high mechanical loads, in the colors black, red, blue, yellow, green, grey & white.



S 4042 L
Bundle Contact Plug 4mm Ø with 4mm Ø axial socket & protective cap, solder connection with two-piece Insulated handle made of Polyethylene & Polyamide for particularly high mech. loads, in the colors black, red, blue, yellow, green, grey & white.



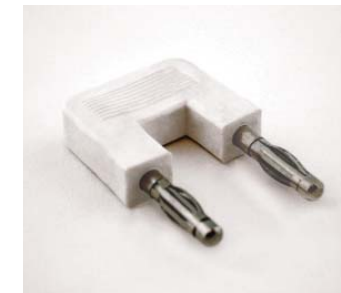
S 4042 S
Bundle Contact Plug 4mm Ø with 4mm Ø axial socket & screw connection with two-piece Insulated handle made of Polyethylene & Polyamide for particularly high mech. loads, in the colors black, red, blue, yellow, green, grey & white.



FK 4042 L
Spring-loaded Plug 4mm Ø with 4mm Ø axial socket & Solder connection with two-piece Insulated handle made of Polyethylene & Polyamide for particularly high mech. loads, in the colors black, red, blue, yellow, green, grey & white.



FK 4046 L
Safety spring-loaded plug 4 mm Ø with 4mm Ø axial socket and solder connection with two piece insulated handle made of Polyethylene and Polyamide with transparent retractable protective sleeve, usable on all 4 mm Ø sockets and safety sockets in black, red, blue, yellow, green and white.



FK 19/4
Short-circuit plug with 4 mm Ø feather/spring baskets and moulded Polyethylene handle in the colors black, red and white.



FK 19/4 mB
Short-circuit plug with 4 mm Ø feather/spring baskets and 4 mm Ø central socket, moulded Polyethylene handle in the colors black, red and white.



SI-FK 19/4
Safety short-circuit plug with 4 mm Ø feather/spring baskets, moulded Polyethylene handle in the colors black, red and white.



SI-FK 19/4 mB
Safety short-circuit plug with 4 mm Ø feather/spring baskets and 4 mm Ø central socket, moulded Polyethylene handle in the colors black, red and white.

4 mm

SAFETY PLUGS SAFETY COUPLINGS

COUPLINGS



FK 1147 L
Safety plug 4 mm Ø with feather/spring basket, solder connection, with Polyethylene handle and cable break protection in the colors black, red, blue, yellow, green and white.



FK 1147 IL
Safety plug 4 mm Ø with feather/spring basket and insulating cap, solder connection, with Polyethylene handle and cable break protection in the colors black, red, blue, yellow, green and white.



FK 1147 C
Safety plug 4 mm Ø with feather/spring basket, crimp connection, with Polyethylene handle and cable break protection in the colors black, red, blue, yellow, green and white. Tested with 1000 V and 16 A to KAT II.



FK 1147 IC
Safety plug 4 mm Ø with feather/spring basket with insulated cap, crimp connection, with Polyethylene handle and cable break protection in the colors black, red, blue, yellow, green and white. Tested with 1000 V and 16 A to KAT II.



FK 1151 L
Safety plug 4 mm Ø with feather/spring basket, solder connection, with Polyethylene handle in the colors black, red, blue, yellow, green and white.



FK 1151 IL
Safety plug 4 mm Ø with feather/spring basket with insulated cap, solder connection, with Polyethylene handle in the colors black, red, blue, yellow, green and white.



FK 1151 C
Safety plug 4 mm Ø with feather/spring basket, crimp connection, with Polyethylene handle in the colors black, red, blue, yellow, green and white. Tested with 1000 V and 16 A to KAT II.



FK 1151 IC
Safety plug 4 mm Ø with feather/spring basket and insulated cap, crimp connection, with Polyethylene handle in the colors black, red, blue, yellow, green and white. Tested with 1000 V and 16 A to KAT II.



FK 4044 S
Safety plug 4 mm Ø with feather/spring basket, axial 4 mm Ø socket, cable connection right-angled, with screw connection. Plug and socket made of brass with molded Polyethylene handle and PVC flexible cable break protection in the colors black, red, blue, yellow, green and white.



SI-KP 4000
Safety coupling with 4 mm Ø socket and solder connection for cables up to 4 mm Ø outside with Polyethylene handle in the colors black, red, blue, yellow, green and grey.



KP 4000 S
Coupling with 4 mm Ø socket and screw connection for cables up to 4mm Ø outside with PVC handle sleeve in the colors black, red, blue, yellow, green and grey.



KP 4000 L
Coupling with socket 4 mm Ø and solder connection for cable up to 4 mm Ø outside with PVC handle sleeve in the colors black, red, blue, yellow, green and grey.

4 mm

SOCKETS

SAFETY SOCKETS



BU 4000
Panel mount 4 mm Ø socket with soldering connection, external thread M 6x0,75 with two nuts, completely brass nickel plated.



BU 4600
Safety socket 4 mm Ø with 14 mm Ø flange and thread M 12x0,75 for panel mount, including two nuts, metal parts rolled nickel plated brass with flat pin 4,8 x 0,8 mm connection, also for soldering, in the colors black, red, blue, yellow, green, yellow/green and white.



BU 4200
Panel mount socket 4 mm Ø with PVC isolated removable head outside 10 mm Ø and solder connection, external thread M 6x0,75 with two nuts, metal parts made of nickel plated brass.



BU 4700
Safety press in socket 4 mm Ø with flange 13,2 mm Ø, will press into 12 mm Ø mounting hole, socket made of tinned brass with 2 mm Ø x 5 mm long solder connection, in the colors black, red, blue, yellow, green, violet, white and yellow/green.



BU 4300
Panel mount socket 4 mm Ø with 4 mm Ø continuous hole, PVC isolated removable head, external thread M 6x0,75 with two nuts, metal parts are made of nickel plated brass.



BU 4701
Safety press in socket 4 mm Ø with flange 13,2 mm Ø will press into 12 mm Ø mounting hole, socket made of tinned brass, solder connection, in the colors black, red, blue, yellow, green and yellow/green.



BU 4400
Fully insulated 4 mm Ø panel mount socket for up to 3 mm panel thickness, screwed 10 mm Ø outside head, solder connection, external thread M 6x0,75 washer and 2 nuts, metal parts are made of nickel plated brass.



BU 4702
Safety press in socket 4 mm Ø with flange 13.2 mm Ø will press into 12 mm Ø mounting hole, socket made of tinned brass, connection pin M 3 x 4 mm long, in the colors black, red, blue, yellow, green and yellow/green.



BU 4400 S
Fully insulated 4 mm Ø panel mount socket for up to 3 mm panel thickness, molded 10 mm Ø outside Polyamide head, solder connection, external thread M 6x0,75 washer and 2 nuts, metal parts are made of nickel plated brass.



BU 4703
Safety press in socket 4 mm Ø with flange 13.2 mm Ø will press into 12 mm Ø mounting hole, socket made of tinned brass, connection pin M 4 x 10 mm long, in the colors black, red, blue, yellow, green and yellow/green.



BU 4500
Socket 4 mm Ø with 12 x 12 mm squared moulded Polyamide head for panel mount of up to 3 mm thickness. Solder connection, external thread M 6x0,75 washer and nut, metal parts are made of nickel plated brass.



BU 4800
Safety press in socket 4 mm Ø with flange 14 mm Ø, will press into 12mm Ø mounting hole, socket made of tinned brass with 2 mm Ø x 5 mm long solder connection, in the colors black, red, blue, yellow, green, violet, white and yellow/green.

4 mm

CONNECTING LEADS



MS 1115
Connecting lead with two bundle contact plugs 4 mm Ø with protective cap and moulded PVC insulated handles with 4 mm Ø axial socket mounted on super flex cable, color and size of cable as per our following cable program.



MFK 1115
Connecting lead with two feather/spring basket contact plugs 4 mm Ø, moulded PVC insulated handles and 4 mm Ø axial socket, with super flex cable, color and size as per our following cable program.



MFK 1147
Safety leads with two feather/spring basket plugs 4 mm Ø, Polyamide handles strengthened protective sleeves and cable break protection, with super flex cable, color and size as per our cable program.



MFK 1162
Safety lead stackable with two feather/spring basket plugs 4 mm Ø, strengthened protective sleeves, moulded Polypropylene handle, 4 mm Ø axial safety socket, with super flex cable, color and size as per our following cable program. Tested with 1000 V and 16 A to KAT II.



MFK 1163
Safety lead stackable with two feather/spring basket plugs 4 mm Ø and protective caps, strengthened protective sleeves, moulded Polypropylene handle, 4 mm Ø axial safety socket, with super flex cable, color and size as per our following cable program. Tested with 1000 V and 16 A to KAT II.

TEST LEADS



MFK 4046
Safety lead with two feather/spring basket plugs 4 mm Ø and insulated caps with retractable protective sleeves, insulated Polypropylene and Polyamide handles, 4 mm Ø axial safety socket, with super flex cable, color and size of cables per our following cable program.



MPFK 1115
Test lead – one end with 4 mm Ø spring loaded moulded 4 mm Ø plug with 4 mm Ø axial socket, the other end 2–4 mm Ø nickel plated test probe with rigid insulated handle, color and size as per our following cable program.



MPFK 1147
Safety test lead – one end with feather/spring basket 4 mm Ø and sharp point fully insulated nickel plated test probe, the other end feather/spring basket 4 mm Ø fully insulated safety socket, color and size as per our following cable program.



MPFK 1151
Safety test lead – one end with rigid 2 mm Ø nickel plated fully insulated test probe, the other end feather/spring basket 4 mm Ø with fully insulated safety socket, color and size as per our following cable program.



KS 17/2
Test probe set - one end with feather/spring basket 4 mm Ø and sharp point fully insulated nickel plated test probe, the other end safety feather/spring basket plugs 4 mm Ø with right-angled cable outlet and moulded PVC handle, color and size as per our following cable program. Tested with 1000 V and 16 A to KAT II.

4 mm

TEST PROBES



P 4000
Test probe - with 2 – 4 mm Ø nickel plated test probe with rigid PVC insulated handle, solder connection for cables up to 4 mm Ø outside diameter, colors black, red, blue, yellow and green.



P 4040
Test Probe - with 2–4 mm Ø nickel plated Test Probe with rigid PVC insulated handle and 4 mm Ø axial hole. Solder Connection for cables up to 4 mm Ø outside diameter. Colors black, red, blue, yellow and green.



P1151
Test probe - with 2 mm Ø solid nickel plated test probe, solder connection, Polyethylene handle with cable break protection and safety collar, in the colors black, red, blue, yellow and green.

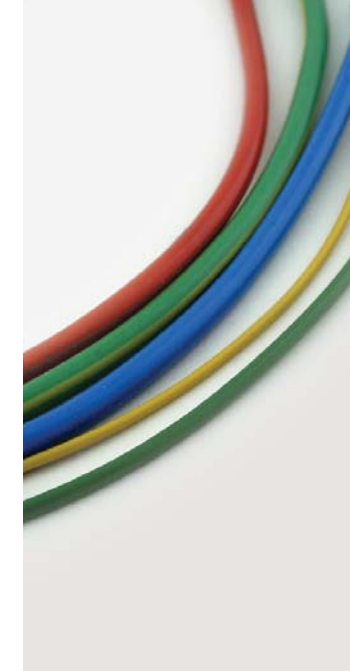


P1152
Test probe - with feather/spring basket 4 mm Ø, sharp point nickel plated and fully insulated with solder connection and Polyethylene handle with cable break protection and safety collar in the colors black, red, blue, yellow and green.



P1162
Safety test probe - with feather/spring basket 4 mm Ø and sharp point nickel plated and fully insulated with 4 mm Ø axial socket and Polyethylene handle with flattend safety collar, in the colors black, red, blue, yellow and green.

CABEL PROGRAM



Cable Program
For our 4 mm highly flexible connecting and test leads in the standard length of 25, 50, 100, 150 and 200 cm in the following super flexible sizes and colors.

1 mm², copper strands 256 x 0.07 Ø, double insulated PVC with outside cable Ø of 3.8 mm in the colors black, red, blue, yellow, green, grey, brown, violet, white and yellow/green.

2,5 mm², copper strands 651 x 0,07 mm Ø single insulated PVC with outside cable Ø of 4.0 mm in the colors black, red, blue, yellow, green, grey, brown, violet, white and yellow/green.

Also available on request:
1, 5 mm², copper strand, double insulated PVC cable.
1, 0 mm², tinned copper strands, single insulated Silicon cable.

2 mm SOCKETS

PLUGS TEST PROBES

CONNECTING LEADS CONNECTOR ADAPTOR

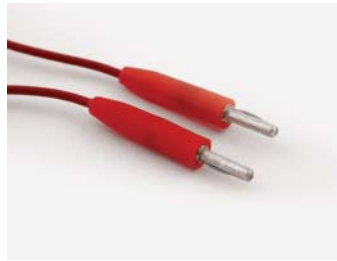
2 mm 3,5 mm 4 mm GOLDCONTACT PLUG SYSTEM

Affordable gold contact plug-system with great versatility. The standard plug system for all applications in the model market.

Enables battery packs/PS to be connected in series. High contact safety, low contact resistance. Safe for short circuit and polarity.



F 2000
Feather/spring wire plug 2 mm Ø with solder connection, silver plated brass plug with Polyethylene handle for 0.25 mm² cable, with outside Ø up to 1.4 mm Ø, in the colors black, red, blue, yellow, green and grey.



MF 2000
Connecting lead with 2 feather/spring wire plugs 2 mm Ø, connected to 0.25 mm² highly flexible PVC cable 128x0.05 mm Ø, with outside Ø 1.4 mm, in the standard length of 10, 25 and 50 cm, in the colors of black, red, blue, yellow, green and grey.



F 2020
Feather/spring wire plug 2 mm Ø with solder connection and 2 mm Ø axial socket, silver plated brass plugs with Polyethylene handle for 0.25 mm² cable, with outside Ø up to 1.4 mm Ø in the colors black, red, blue, yellow, green and grey.



MF 2020
Connecting lead with 2 feather/spring wire plugs 2 mm Ø and 2 mm Ø axial sockets connected to 0.25 mm² highly flexible PVC cable 128x0.05 mm Ø with outside Ø 1.4 mm, in the standard length of 10, 25 and 50 cm in the colors of black, red, blue, yellow, green & grey.



FK 2000
Feather/spring basket plug 2 mm Ø with solder connection, silver plated brass plugs with Polyethylene handle for 0.25 mm² cable, with outside Ø up to 1.4 mm Ø, in the colors black, red, blue, yellow, green and grey.



MFK 2020
Connecting lead with two feather/spring basket 2 mm Ø plugs and 2 mm Ø axial sockets, molded PVC handle, connected to 0.25 mm² highly flexible PVC cable 128x0.05 mm Ø, with outside Ø 1.4 mm in the length of 10, 25 and 50 cm in black, red, blue, yellow, green & grey.



BU 2100
Panel mount 2 mm Ø socket with solder connection, external thread M 4 nut, head Ø 6 mm, completely brass nickel plated.



P 2000
Test probe with solder connection, for cables up to 2 mm Ø, Polyethylenes handle with cable break protection, in the colors black, red, blue, yellow and green.



BU 2200
Short solder socket 2 mm Ø with continuous axial hole, outside 2,6 mm Ø, head Ø 3 mm, overall length 4 mm, brass silver plated.



P 2020
Test probe with axial 2 mm Ø socket, Polyamide covered, total length 60 mm, in the colors black, red, blue, yellow, green and grey.



BU 2300
Long solder socket 2 mm Ø with continuous axial hole, outside 2,6 mm Ø, head Ø 3 mm, overall length 4 mm, brass silver plated.



ÜS 2040
Connector adaptor with 2 mm Ø feather/spring wire plug and 4 mm Ø axial socket, silver plated brass and PVC handle, in the colors black, red, blue, yellow, green and grey.



BU 2400
Panel mount socket 2 mm Ø, silver plated, fully isolated with M 4 external thread and nut and solder connection in the colors black, red, blue, yellow, green, grey and white.



ÜS 4020
Connector adaptor with 4 mm Ø bundle contact plug and 2 mm Ø axial socket, silver plated brass and PVC handle, in the colors black, red, blue, yellow, green and grey.



DS 2
Gold contact plug system with two feather/spring basket plugs 2 mm Ø and two couplings as well as two PVC handle pairs for polarity safe assembly on cables up to 1.5 mm², load current up to 20 A, handles in the colors red, black and yellow, others available on request. Plug without handles also available.



DS 2 CHARGE CABLE
Ready made highly flexible 1.5 mm² Silicone cable for charging battery packs, 20 cm long, DS 2 gold contact plug system and high-quality 4 mm Ø bundle gold contact plugs.



DS 3.5
Gold contact plug system with two feather/spring basket plugs 3,5 mm Ø and two couplings as well as two PVC handle pairs for polarity safe assembly on cables up to 2.5 mm², load current up to 35 A, handles in the colors red, black and yellow, others available on request. Plug without handles also available.



DS 3.5 CHARGE CABLE
Ready made highly flexible 2.5 mm² silicone cable for charging battery packs, 20 cm long, DS 3.5 gold contact plug system and high-quality 4 mm Ø bundle gold contact plugs.



DS 4
Gold contact plug system with two feather/spring basket plugs 4 mm Ø and two couplings as well as two PVC handle pairs for polarity safe assembly on cables up to 2.5 mm², load current up to 50 A, handles in the colors red, black and yellow, others available on request. Plug without handles also available.



DS 4 CHARGE CABLE
Ready made highly flexible 2.5 mm² silicone cable for charging battery packs, 20 cm long, DS 4 gold contact plug system and high-quality 4 mm Ø bundle gold contact plugs.



DS 4 BRIDGING PLUGS
With the help of the DS 4 bridging plugs 2 battery packs can easily be connected in series. Example: To fly 14 cells correspond to 2 x 7 cells in series, to charge 2 x 7 cells separated.



DS 4 ASSEMBLY BLOCK
Auxiliary help facility for soldering and assembling of the DS 4 gold contact system.



DS 2 REGULATOR CABLE
Ready made high flexible 1.5 mm² Silicon cable and DS 2 feather/spring basket gold contact plug.



DS 4 BATTERY PACK CABLE
Ready made highly flexible 2,5 mm² Silicon battery cable with DS 4 feather/spring basket gold contact plugs. Also available as a DS 2 version.



DS 4 REGULATOR CABLE
Ready made high flexible 2.5 mm² Silicon cable and DS 4 feather/spring basket gold contact plug.



Our gold contact plugs are all "Made in Germany". Springs are marked with origin.

2,4 mm

PLUGS SOCKETS

4 mm

CHASSIS PLUGS

SAMPLE OF SPECIAL PLUGS

SPECIAL SOCKETS



N 2400
Bundle contact 2,4 mm Ø silver plated brass plug, solder connection with Polyethylene handle for cable of 0.5 mm², outside to 2.0 mm Ø in the colors black, red, blue, yellow, green and grey.



Chassis mount bundle contact 4 mm Ø plug with protective cap 6 x 6 mm flange and M 3 tread 8 mm long, nickel plated. Gold plating available on request.



Chassis mount feather/spring basket 4 mm Ø plug with 6 x 6 mm flange and M 5 tread 11 mm long with crimp connection, nickel plated. Gold plating available on request.



Chassis mount feather/spring basket 4 mm Ø plug with 5,5 mm Ø knurled flange and solder connection, nickel plated. Gold plating available on request.



F 2400
Feather/spring wire 2,4 mm Ø silver or nickel plated brass plug, solder connection with Polyethylene handle for cable of 0.5 mm², outside up to 2.0 mm Ø in the colors black, red, blue, yellow, green and grey.



Chassis mount bundle contact 4 mm Ø plug with protective cap, SW 6 flange and M 3 tread 12 mm long, nickel plated. Gold plating available on request.



Chassis mount feather/spring basket 4 mm Ø plug with cross hole and solder connection, nickel plated. Gold plating available on request.



Chassis mount feather/spring basket 4 mm Ø plug with insulated cap, short version, and solder connection, nickel plated. Gold plating available on request.



FK 2400
Feather/spring basket 2,4 mm Ø plug silver, nickel or gold plated brass with solder connection and Polyethylene handle for cable of 0.5 mm², outside Ø up to 2.0 mm in the colors black, red, blue, yellow, green and grey.



Chassis mount bundle contact 4 mm Ø plug with protective cap, 6 x 6 mm flange and M 5 tread 11 mm long, solder connection, nickel plated. Gold plating available on request.



Chassis mount feather/spring basket 5 mm Ø plug with extra long shaft, solder connection, nickel plated. Gold plating available on request.



Plug from Copperberyllium, solid plug with cross cut point, connections to customer's request.



EF 2400
Chassis mount feather/spring 2,4 mm Ø silver plated brass plug, with soldering connection and SW 6 flange and M 4 thread.



Chassis mount feather/spring basket 4 mm Ø plug with solder connection and 6 x 6 mm flange, M 5 tread 11 mm long, nickel plated. Gold plating available on request.



Chassis mount flat-feather/spring plug, particularly suited for square sockets.



Special plug with 1,5 mm Ø pin, in different lengths and soldering connection with pivoting for plastic handle out of nickel or gold plated brass.



BU 2424
Panel mount socket 2,4 mm Ø, silver plated, fully insulated with M 4 external thread and 2 nuts, solder connection, in the colors black, red, blue, yellow, green, grey and white.



Chassis mount feather/spring basket 4 mm Ø plug with solder connection and 6 x 6mm flange, M 5 tread 15,5 mm long, nickel plated. Gold plating available on request.



Mega bundle plug up to 10 mm Ø, nickel plated brass. Gold plating available on request.



Chassis mount feather/spring basket socket 4 mm Ø, outside 5,5 mm Ø, with Solder connection out of nickel plated brass. Gold plating available on request.

SPECIAL PLUGS FROM STAINLESS STEEL

FEATHER/SPRING BASKET CONTACTS



N V2A 4000
Bundle contact plug 4 mm Ø with M 4 thread and solder connection, from V2A steel.



G V2A
Plug handle with M 4 internal thread for 4 mm Ø V2A plug from V2A steel.



N V4A 4000
Bundle contact plug 4 mm Ø with M 4 Thread and solder connection, from V4A steel.



G TEFLON
Teflon plug handle with M 4 internal thread for 4 mm Ø V2A Plug.



S V2A 4000
Bundle contact plug 4 mm Ø with protective cap and M 4 thread with solder connection, from V2A steel.



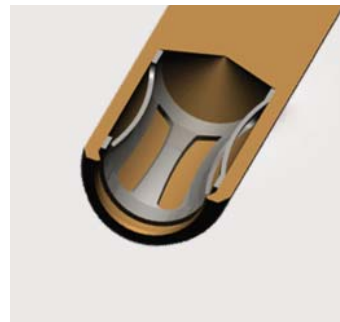
G ALU
Aluminum plug handle with M 4 internal thread for 4 mm Ø V2A plug.



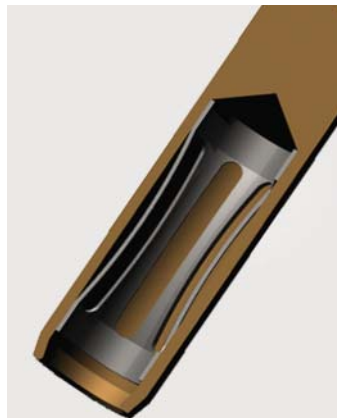
BU V2A 4000
Panel mount socket 4 mm Ø with solder connection and external thread M 6x0.75 from V2A steel.



Nut V2A
Hexagon nut SW 8 x 2 mm with M 6x0.75 mm thread from V2A steel.



FEATHER/SPRING BASKET CONTACTS
We manufacture these for plugs and sockets from 1.0 mm Ø onwards out of high quality Copperberyllium for lasting flexibility and for optimum contact.



LEAD RACK COMPONENTS FOR 2 mm AND 4 mm CONNECTING LEADS



MH 2000
Plastic lead bracket with 7 mm spacing which results in a gap of 2 mm, suitable for 2 mm Ø connecting leads.

Lead racks to save space, for sorting into length and colors. No tools required for assembly, just push together, simply attach, wedge, and finished.



MH 4000
Plastic lead bracket with 10 mm spacing which results in a gap of 5 mm suitable for 4 mm Ø connecting Leads.



HS 15
Al.rail for mounting of plastic brackets, 15 cm long with two mounting holes and mounting material.

HS 25
Al.rail for mounting of plastic brackets, 25 cm long with two mounting holes and mounting material.

HS 50
Al.rail for mounting of plastic brackets, 50 cm long with two mounting holes and mounting material.

HS 100
Al.rail for mounting of plastic brackets, 100 cm long with two mounting holes and mounting material.



MHS 2015
Lead rack set consisting of one HS 15 rail, seven MH 2000 brackets for app. 60 x 2 mm Ø connecting leads plus mounting instruction and mounting material in plastic bag.



MHS 4015
Lead rack set consisting of one HS15 rail, nine MH 4000 brackets for app. 40 x 4 mm Ø connecting leads plus mounting instruction and mounting material in plastic bag.

MHS 4025
Lead rack set consisting of one HS 25 rail, 20 x MH 4000 brackets for app. 60 x 4 mm Ø connecting leads plus mounting instruction and mounting material in plastic bag.

MHS 4050
Lead rack set consisting of one HS 50 rail, 45 x MH 4000 brackets for app. 40 x 4 mm Ø connecting leads plus mounting instruction and mounting material in plastic bag.



MHW 50
Lead rack trolley - not assembled. Made of 25 mm² Aluminum tube, corners and wheels, easy to assemble, consisting of 3 x HS 50 al. rails and 3 x 45 MH 4000 brackets, height 100 cm. (no connecting leads)

MHW 50/140
Lead rack trolley - not assembled. Made of 25 mm² Aluminum tube, corners and wheels, easy to assemble, consisting of 3 x HS 50 al. rails and 3 x 45 MH 4000 brackets, height 140 cm. (no connecting leads)

MHW 50/160
Lead rack trolley - not assembled. Made of 25 mm² Aluminum tube, corners and wheels, easy to assemble, consisting of 3 x HS 50 al. rails and 3 x 45 MH 4000 brackets, height 160 cm. (no connecting leads)

MHW 100
Lead rack trolley - not assembled. Made of 25 mm² Aluminum tube, corners and wheels, easy to assemble, consisting of 3 x HS 100 al. rails and 3 x 95 MH 4000 brackets, height 100 cm. (no connecting leads)

MHW 100/140
Lead rack trolley - not assembled. Made of 25 mm² Aluminum tube, corners and wheels, easy to assemble, consisting of 3 x HS 100 al. rails and 3 x 95 MH 4000 brackets, Height 140 cm. (no connecting leads)

MHW 100/160
Lead rack trolley - not assembled. Made of 25 mm² Aluminum tube, corners and wheels, easy to assemble, consisting of 3 x HS 100 al. rails and 3 x 95 MH 4000 brackets, Height 160 cm. (no connecting leads)

HOOK-ON CONNECTOR BINDING POST



AKL 1000
Hook-on clamp made of phosphor bronze, gold plated with insulated handle, made of Polyamide in the colors black, red, blue, yellow, green and white.



PK 001
Binding post with 4 mm Ø socket, fully insulated, knurled 12 mm Ø head, nickel plated brass socket, two M 4 nuts, two divided insulated spacers for front panel mounting of up to 2 mm thickness, current rating up to 6 A, in the colors of black, red, blue, yellow, green, violet and yellow/green. (as per picture)

PK 043
Binding post with 4 mm Ø socket, fully insulated, square flat 31 x 31 mm head, nickel plated brass socket, two M 6x0.75 nuts, two divided insulated spacers for front panel mounting of up to 3 mm thickness, current rating up to 63 A, in the colors of black, red, blue, yellow, green, violet and yellow/green. (no picture)

PK 044
Binding post with 4 mm Ø socket, fully insulated, square flat 45 x 45 mm head, nickel plated brass socket, two M 8x0.75 nuts, two divided insulated spacers for front panel mounting of up to 4 mm thickness, current rating up to 100 A, in the colors of black, red, blue, yellow, green, violet and yellow/green. (no picture)

PK 046
Binding post with 4 mm Ø socket, fully insulated, square flat detachable 70 x 70 mm head, nickel plated brass socket, two M 12x0.75 nuts, two divided insulated spacers for front panel mounting of up to 9 mm thickness, current rating up to 200 A, in the colors of black, red, blue, yellow, green, violet and yellow/green. (no picture)

ALIGATOR CLIPS



KR 1000
Alligator clip, 6 mm opening width, PVC insulating sleeve, and solder connection in the colors black and red.



KR 4000
Alligator clip, 49 mm long, with 4 mm Ø hole for possible connections, nickel plated.



KR 4040
Alligator (Dolphin) clip, with 4 mm Ø socket for possible connections, fully insulated in the colors black, red, blue, yellow, green and white.



SI-KR 4040
Safety alligator (dolphin) clip with 4 mm Ø safety socket, fully insulated in the colors black, red, blue, yellow, green and white.

CONNECTING LEAD KITS

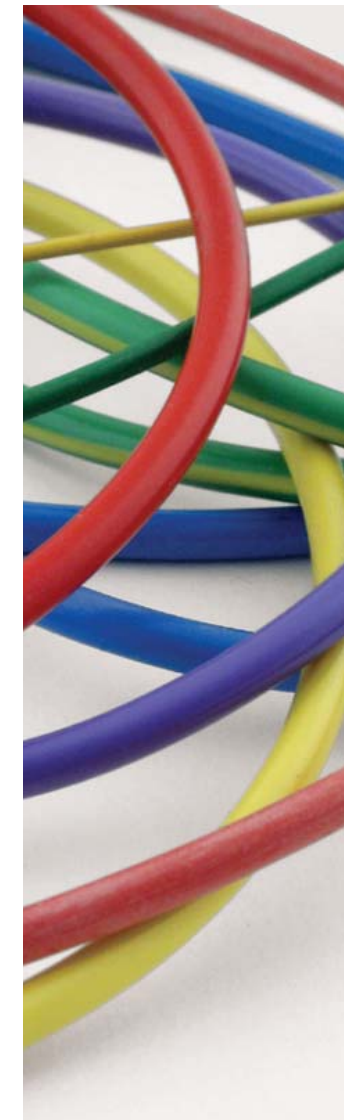


MS 4041/2x1
Connecting lead kit with two PVC 1.0 mm² copper strand cable 100 cm long, four 4 mm Ø bundle contact plugs with protective cap, four Polyethylene handles in the colors red and black with assembly instructions, all in plastic satchel.



MS 4041/5x1
Connecting lead kit with five PVC 1.0 mm² copper strand cable 100 cm long, ten 4 mm Ø bundle contact plugs with protective cap, ten Polyethylene handles in the colors black, red, yellow & green with assembly instructions, all in plastic satchel.

CABLE MATERIAL IN 100 m COILS



CABLEMATERIAL
super flex multistrand, in 100m coils

0.25 mm² copper strands 128 x 0,05 mm, PVC single insulated, outside 1.4 mm Ø in the colors black, red, blue, yellow and green.

0.25 mm² copper strands 128 x 0,05 mm, Silicone insulated, outside 2 mm Ø in the colors black and red.

0,5 mm² copper strands 256 x 0,05 mm, PVC insulated, outside 1.9 mm Ø in the colors black, red, blue, yellow and green.

0.5 mm² copper strands 129 x 0,07 mm, Silicone insulated, outside 2.0 mm Ø in the colors black, red, blue, yellow and white.

1.0 mm² copper strands 259 x 0,07 mm, PVC single insulated, outside 3.0 mm Ø in the colors black, red, blue, yellow and green. (only available in 200 m)

1.0 mm² copper strands 259 x 0,07 mm, PVC double insulated, outside 3.8 mm Ø in the colors black, red, blue, yellow, green, grey, brown, violet, white and yellow/green.

1.0 mm² tinned copper strands 512 x 0.05 mm, silicone insulated, outside 3.5 mm Ø in the colors black, red, blue, yellow and green.

1.5 mm² copper strands 392 x 0,07 mm, PVC double insulated, outside 3.8 mm Ø in the colors black, red, blue, yellow, green and yellow/green.

2.5 mm² copper strands 651 x 0,07 mm, PVC insulated, outside 4 mm Ø in the colors black, red, blue, yellow, green, grey, brown, violet, white and yellow/green.

2.5 mm² copper strands 651 x 0.07 mm, Silicone insulated, outside 3,9 mm Ø in the colors black and red.

THE COMPANY

YOUR CONTACT PERSON'S



Ottmar Schnepf, company founder
The company was established in 1945 by Ottmar Schnepf in Fellbach near Stuttgart as a Laboratory for Radio Interference and High Frequency Measuring techniques. Up to a view years ago Ottmar Schnepf was still involved in the company in research and the design work.



Wolfgang Schnepf, proprietor, responsible for purchasing and sales.
Since 1968 he is responsible for all commercial management matters. In 1979 Ottmar Schnepf handed all company controls to Wolfgang Schnepf.

Direct dialing: 06264 9203-20



Ulrich Friedrichs, responsible for all technical aspects, designs and developments.

Direct dialing: 06264 9203-24



Gunnar Schnepf, responsible for the commercial completion (orders & shipment).
Since 2001, with Gunnar Schnepf the Company consists of three generations .

Direct dialing: 06264 9203-25



Bruno Krueger, toolmaker, responsible for production and quality control.

Direct dialing: 06264 9203-26



Neudenau manufacturing plant
In June 1994 the company was relocated from Fellbach to Neudenau on the Jagst. The new manufacturing plant offers an ideal workplace environment and plenty of expansion opportunities.

SCHNEPP

16 Connecting and Measuring

Ottmar Schnepf
Electronic Components
Auweg 5
D 74861 Neudenau
Fon +49 6264 9203-0
Fax +49 6264 920333
E-mail faosp@web.de
www.schnepf-neudenau.de

